

Web4Health

22071Y2C2DMAL2

Attachment to REPORT D5.1 version 1.0

Dreamweaver and Word Templates
for Web4Health Web Design
Report D5.1B

Written by:
Jacob Palme, KTH

Contractual Date of Delivery: 1 Jan 2003

Last Revision: 20 Dec 2002

Nature of the Deliverable: Report

Deliverable Type: Public

Workpackage WP2

Responsible Partner: FH NON

***Type: PU-public, LI-limited, RP-restricted**

****Nature: PR-Prototype, RE-Report, SP-Specification, TO-Tool, OT-Other**

1 Table of Contents

1	Table of Contents	2
2	Executive Summary	3
3	Installation	3
	3.1 Site Name.....	3
	3.2 Selecting the Web4Health Folder	5
	3.3 Remote Server	6
	3.4 Advanced Settings.....	6
4	Starting to Write	8
	4.1 Attaching to a Template	10
5	Notes when writing answers.....	10
	5.1 Fields to Fill In.....	10
	5.2 Simple HTML	11
	5.3 Links between Answers	11
	5.4 Links to other Web Sites	14
	5.5 Subject Trees.....	15
	5.6 Translating FAQs with Links in them	16
6	Inserting Pictures in Answers	18
7	Alternative: Word Template.....	19
	7.1 Installation of this Template	19
	7.2 Writing a new FAQ	19
	7.3 Default Values	20
	7.4 Inserting WWW links.....	20
	7.5 Getting FAQs Inserted into the Data Base	20
	7.6 Comparison to Using Dreamweaver	20
8	References	21
	Appendix A: Directory Structure of Web Site.....	21
	web4health main directory	21
	Language subdirectories (de, el, en, it, nl, sv)	21
	Templates subdirectory	22

2 Executive Summary

This document describes a format for producing answers to the Web4Health collection of answers to questions in the mental health area. The format described in this document is the format, which has been used by the Swedish partners in developing information before the start of the Web4Health project.

This document assumes that you are using Dreamweaver MX under Windows 2000. Some of the examples may not work exactly like shown here if you are using another version of Dreamweaver. It might be possible to use another program for editing the pages, but then the instruction here may not apply.

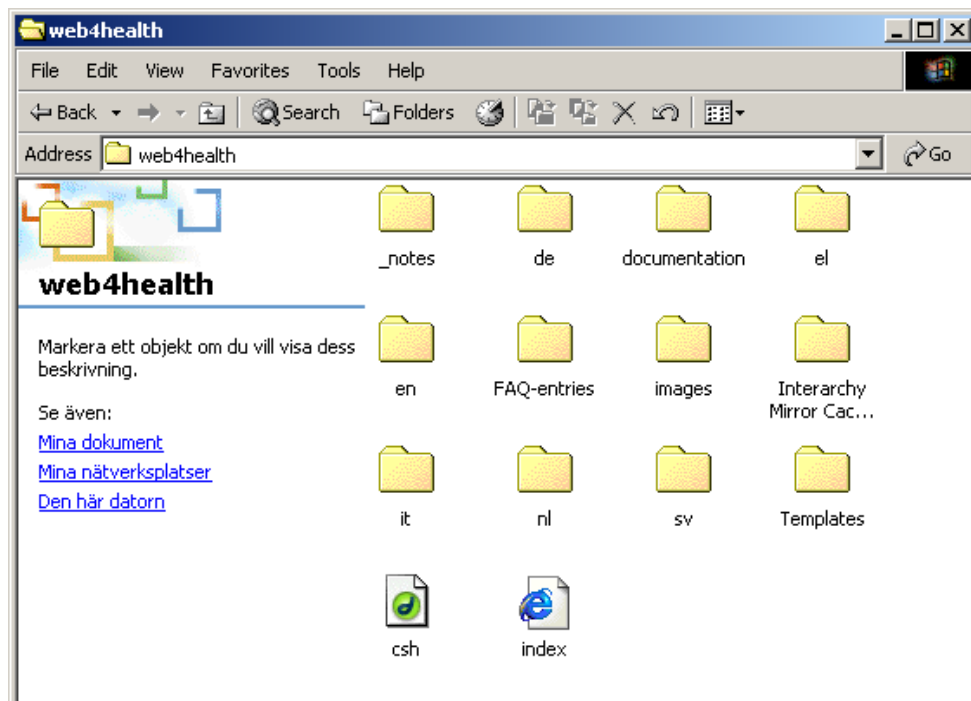
3 Installation

This is something you need do only once, so if you have problems with this, ask an expert for help.

After installing Dreamweaver, download the file <http://cmc.dsv.su.se/KOM2002/web4health.zip> and unpack this file.

After unpacking, you will get a directory structure as shown in Appendix A on page 8.

The web4health folder will look something like this if you are using Windows 2000:

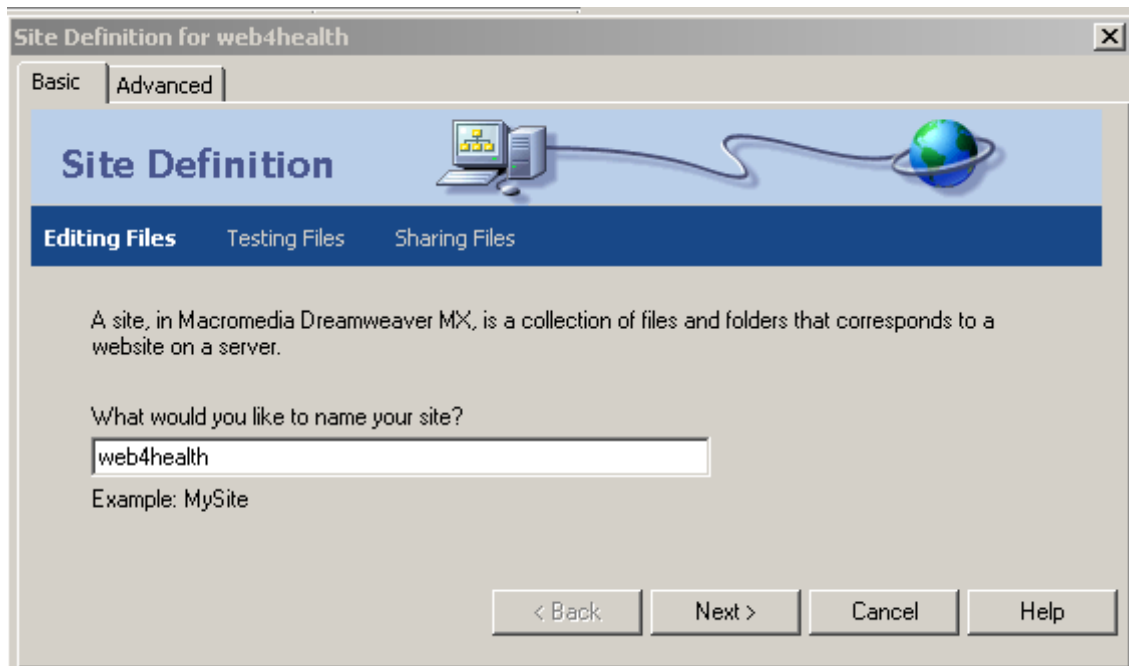


This text is in Swedish but will for you be in some other language.

Start Dreamweaver, use the command **Site -> New Site...** and define a new site as follows:

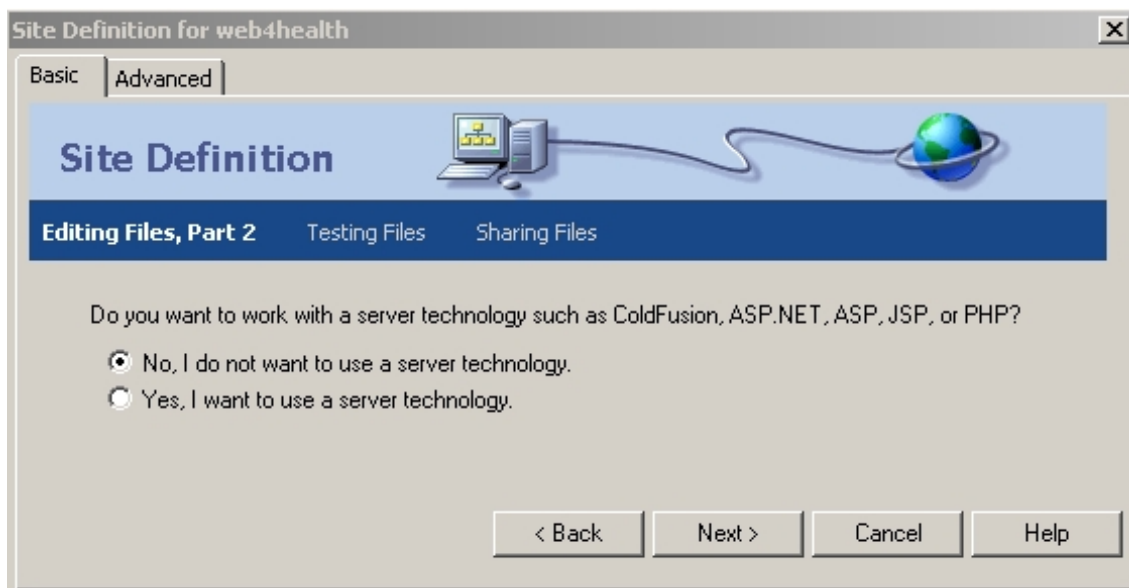
3.1 Site Name

When you give the command **Site -> New Site...** to Dreamweaver, you will get the following window first:



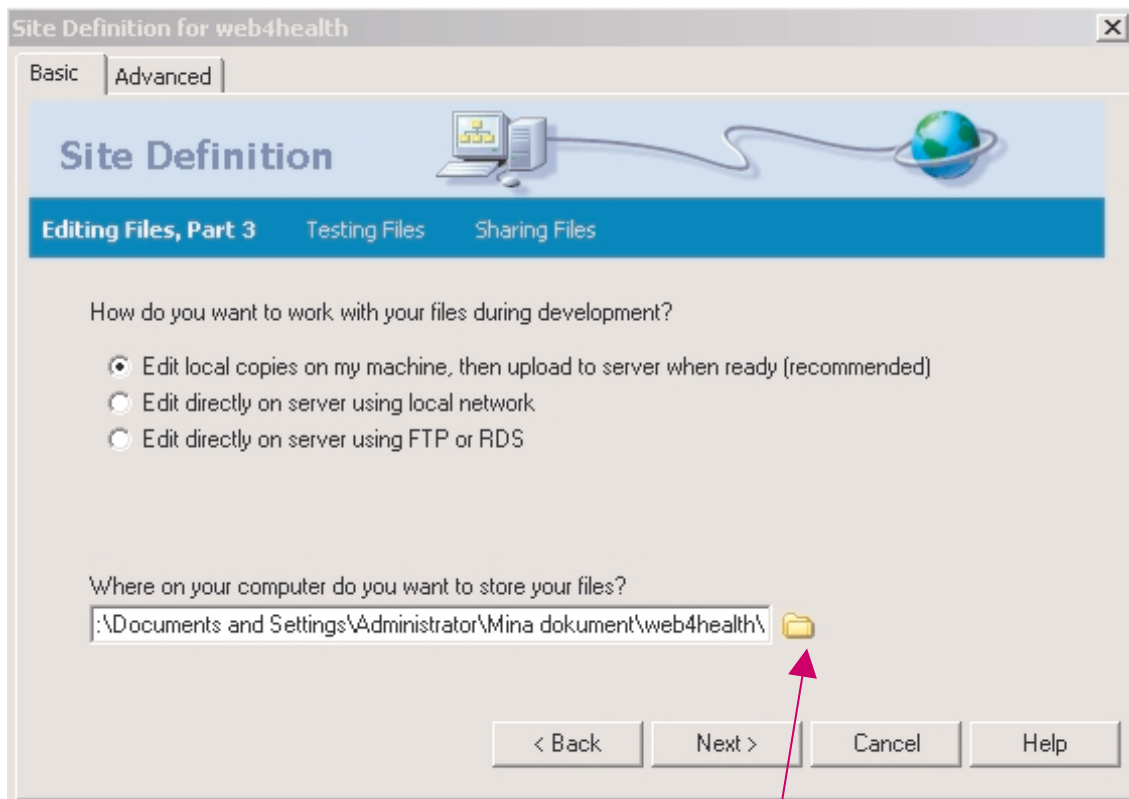
Type "web4health" as the site name, and push the **Next>** button.

You will then get the following window:



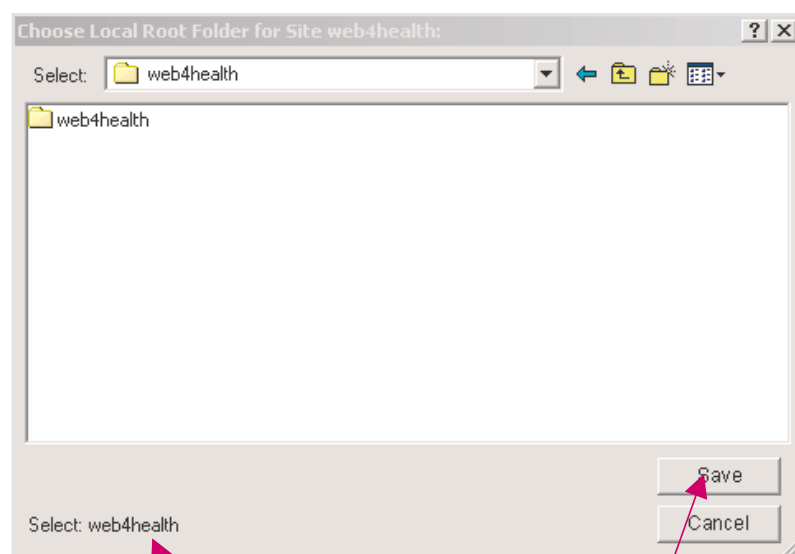
Just push the **Next>** button again.

3.2 Selecting the Web4Health Folder



Click on this folder symbol to select the web4health folder you have just unzipped.

When you click on the folder symbol in the window above, you will get into a file selection window, where you can locate the web4health folder, which you have just unzipped:

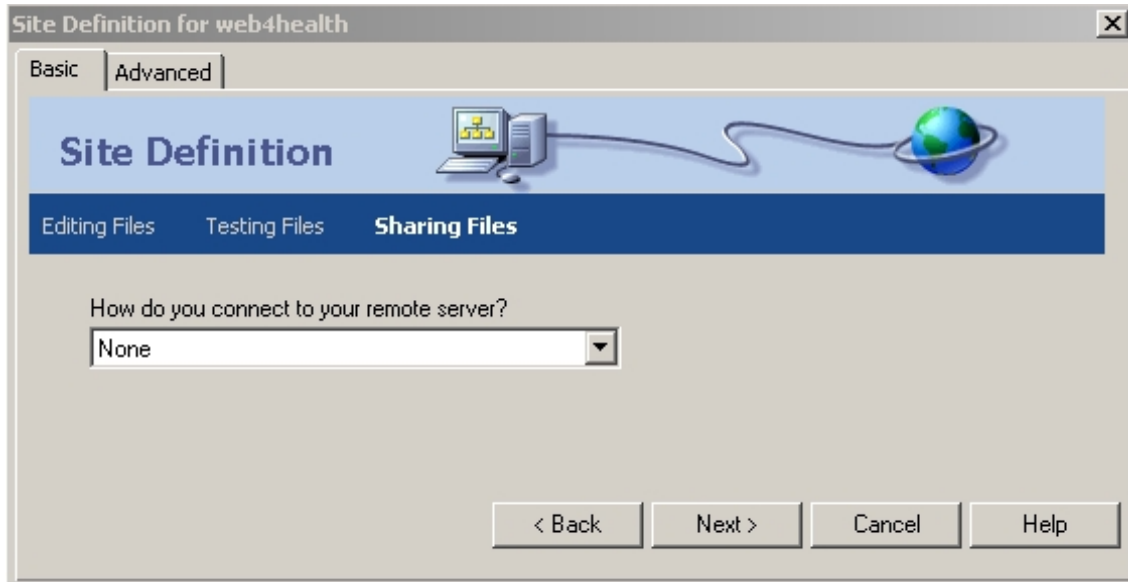


When this text says "web4health"

Push this button to select this folder

3.3 Remote Server

When you push **Next:** you get to this window.

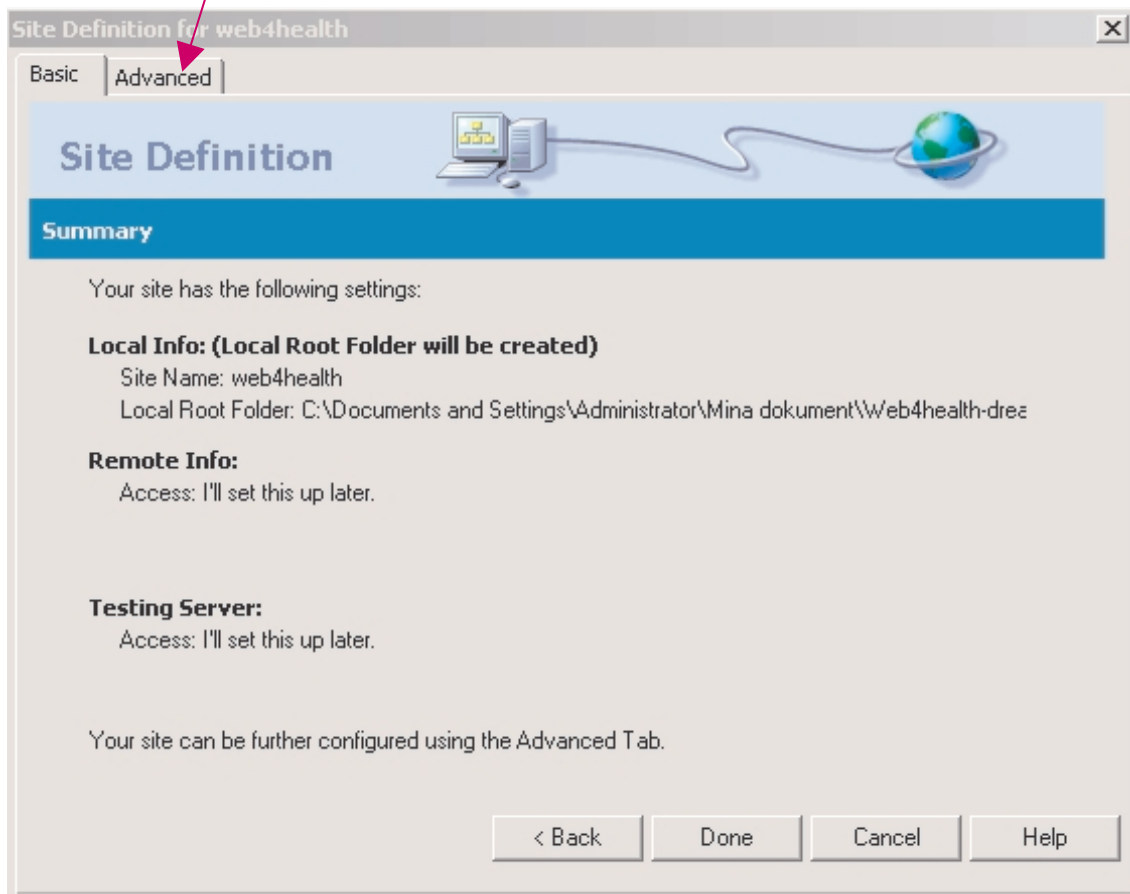


Just push **Next:** again, we will probably not use any of the built-in methods for submitting files.

3.4 Advanced Settings

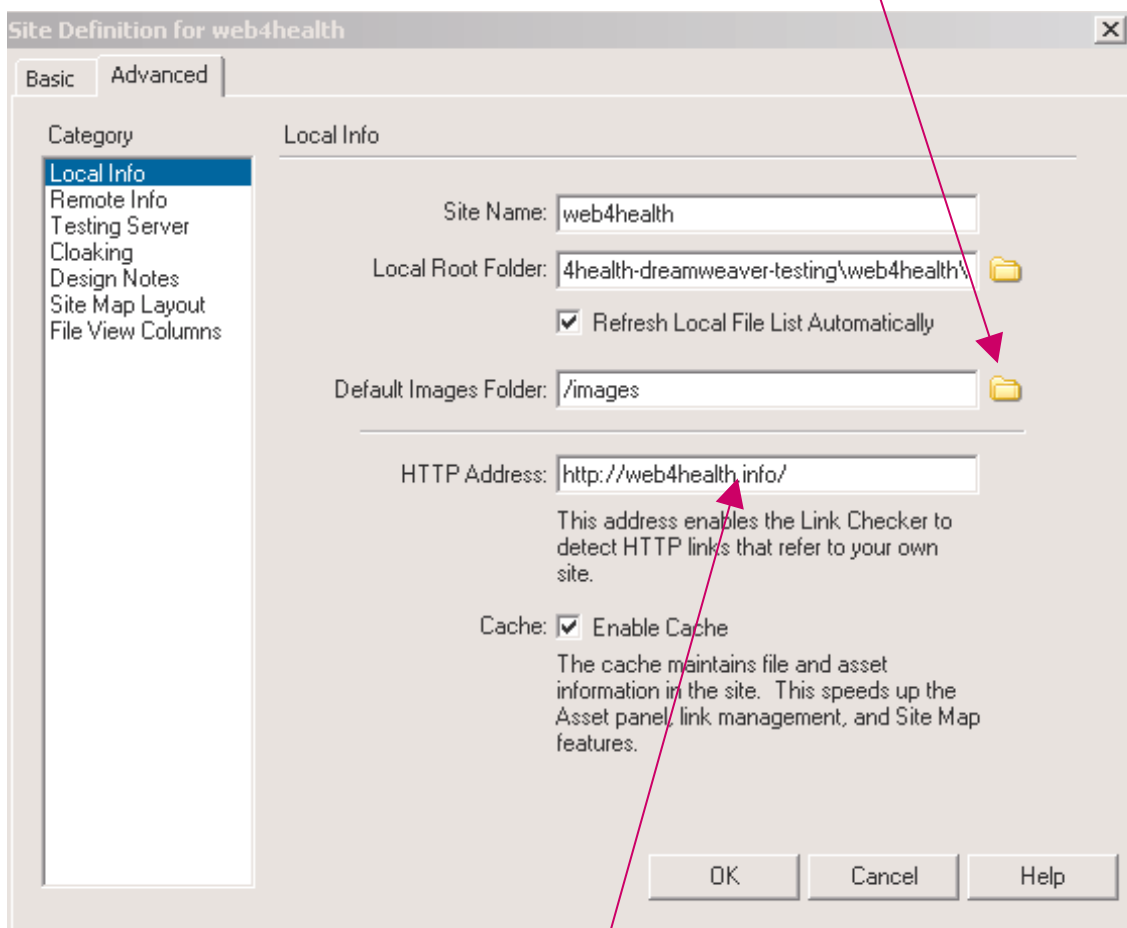
When you pushed **Next:** again, you got to the following window, where you click on the **Advanced:** tab.

Advanced tab



You then get to the following window, where you need to make two more settings:

Click here and select the “images” folder within the “web4health” folder which you have just unzipped. Note that this “images” is only for language-independent pictures. If you need to use language-dependent pictures (such as pictures with text, see for example <http://web4health.info/en/answers/ed-psy-versus-normal.htm>) then you have to put them in the separate “images” folders within each language subfolder.



In this field, type the text `http://web4health.info/`.

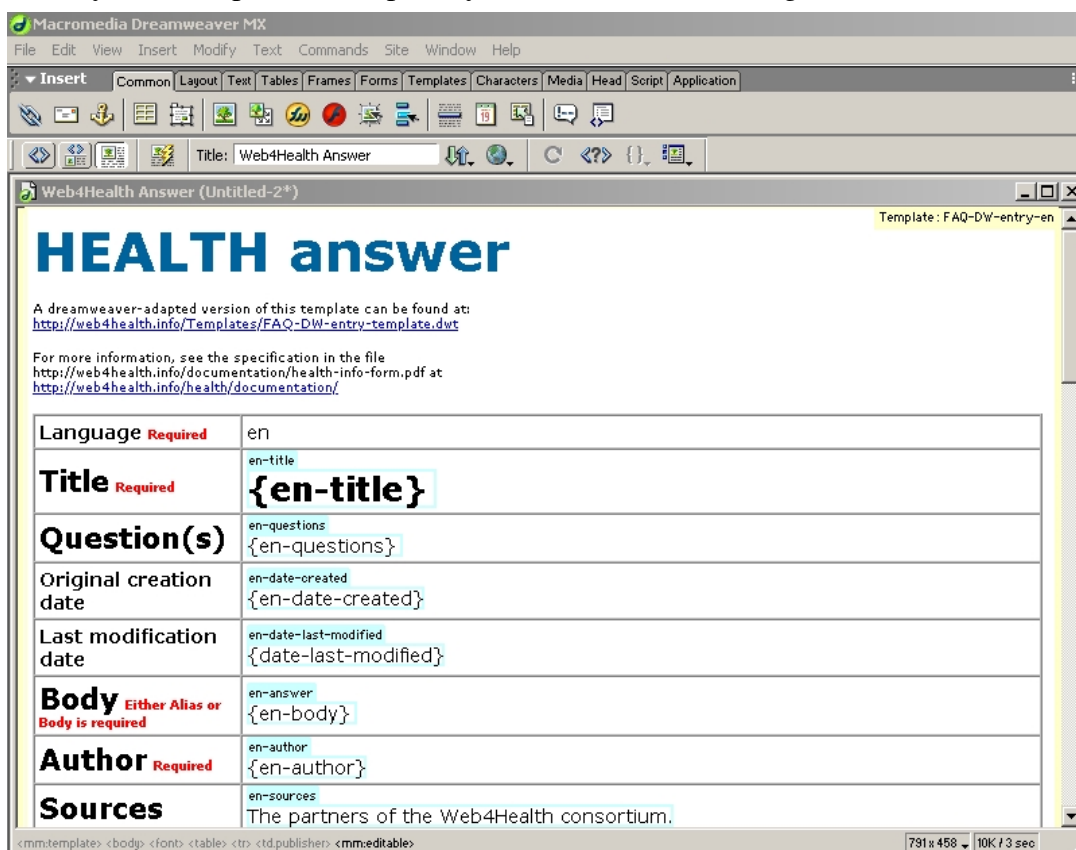
4 Starting to Write

To start writing a new health informational answer, use the Dreamweaver command `File -> New from Template` and select one of the following four templates:

Template file name	Description
FAQ-DW-entry-all.dwt	Template for entering a page in all languages
FAQ-DW-entry-de.dwt	Template for entering a page in German
FAQ-DW-entry-el.dwt	Template for entering a page in Greek
FAQ-DW-entry-it.dwt	Template for entering a file in Italian
FAQ-DW-entry-nl.dwt	Template for entering a file in Dutch
FAQ-DW-entry-sv.dwt	Template for entering a file in Swedish

FAQ-DW-entry-en-Sweden.dwt Template for entering a file in English with Swedish default author and source (Shown as an example, partners can make similar modifications to their templates to enter their default author and source).

When you have opened a template, you will see the following window:

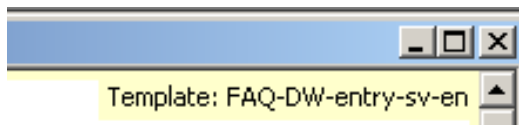


If the file contains the entry in more than one language, each language is separated by a language-row. Attributes common to all languages can in such a case be placed before the first language row. Apart from this, the order of the rows is not significant.

Important: Immediately after opening the template, use the **File->Save As** command and save it, in the folder “web4health/??/FAQ-entries” where “??” is the language of the entry you are writing, giving it a name according to the specification in [D 5.1C]. This **must** be done before you specify any links or pictures in your web page, otherwise the links will not work correctly.

Save each answer as a separate file, choosing the file name as specified in [D5.1C] which can be found at <http://cmc.dsv.su.se/web4health/documentation/KOM2002-page-naming.doc>. Add “.htm” at the end of the file name when saving it. Save them in the folder `web4health/??/FAQ-entries/` where “??” is the language of the entry you are writing.

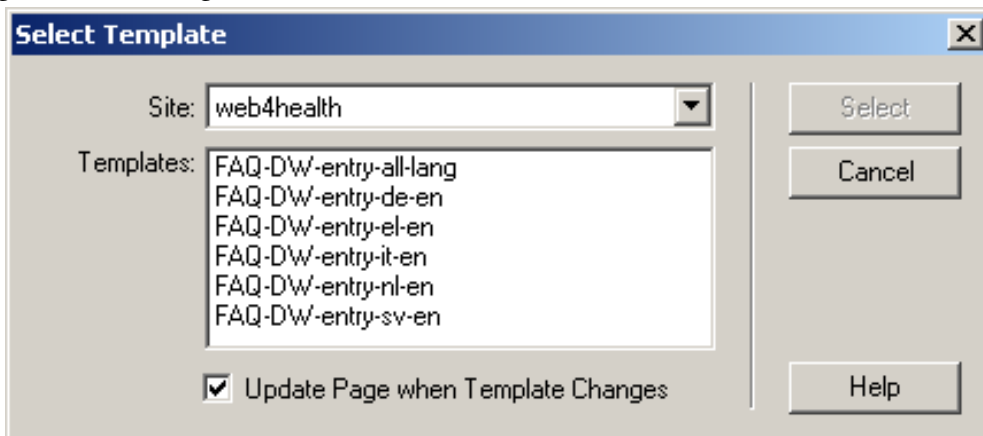
If you have downloaded a web page from another computer, it may not be attached to a template. If you are attached to a template, then the template name is shown in the upper right corner of the text window, something like this:



If you do not see this, you have to attach to a template. How to do this is described in section 4.1 below.

4.1 Attaching to a Template

Use the Dreamweaver command `Modify -> Templates -> Apply Template to file`. You will then get the following window:



In this window, select the Template to use, depending on which language you are entering the page in (for example, FAQ-DW-entry-de means an FAQ in the German).

5 Notes when writing answers

5.1 Fields to Fill In

When you fill in the template, you need initially only fill in the following items:

Field name	Contents	Example
Question	Typical question or questions which users might ask to get to this answer. Not too long.	Which drugs against obesity are good? Is there any good medicine against overweight?
Title	Title to be shown on top of the answer page	Drugs for treatment of obesity
Body	Full text of the answer.	<p>Xenical is a medicine which reduces the colon's ability to absorb fat. The usual side effect is diarrhoea.</p> <p>A medicine called Previa or Naltrexone, which was originally used for heroin addiction, can also reduce the problems of alcoholism and eating disorders. Some studies indicate that large doses are required for this effect. The cost is at present very high. More.</p> <p>Phenylpropanolamine has been sold in USA as a medicine for overeating. However, it is not very effective and is believed to increase the risk of heart disease.</p> <p>Medicines like Prozac, Fontex and Seroscand (Fluoxetine) which raise the level of Serotonin can be a useful component in the treatment of compulsive eating. They reduce hunger initially. This effect, however, disappears if you take them regularly for several weeks.</p> <p>They normalise emotions. This effect will not show until after several weeks.</p> <p>Reductil (Sibutramine, Meridia) is a similar medicine, where reduction of hunger is greater at the beginning of treatment. Also here, the effect diminishes with time. A disadvantage is that Reductil is far more expensive than Fluoxetine.</p>

Sources	Indicate the sources for the information given. If you have no other sources, put yourself as the source. Use the numbered list facility of HTML (......)	<ol style="list-style-type: none"> 1. Addiction and the Eating Disorders, by Caroline Davis, Ph.D., Psychiatric Times, February 2001. 2. Eating Disorders and Addiction, by Barton J. Blinder, M.D., Ph.D.; Mary C. Blinder, M.D.; and Visant A. Sanathara, Psychiatric Times, December 1998. 3. Personality Characteristics of Females Seeking Treatment for Obesity, Bulimia Nervosa and Alcoholic Disorders, by G. Palme and J. Palme, Personality and individual differences 26(1999), Pergamon Press. 4. Eating Disorders, Obesity, Anorexia Nervosa and the Person Within, by Hilde Bruch, 1973., Basic Books, New York. 5. Anorexia Nervosa and Bulimia Nervosa, Diagnosis, Treatment and the Role of Impulsivity for Long-Term Outcome, by S- Spjöberg. 1987. Acta Universitatis Upsaliensis, Uppsala. 6. Treatment of severe Obesity, by H. Björvell, 1985. Gustav V-s forskningsinstitut, Karolinska Institutet, Stockholm. 7. An explorative study of bulimia and other excessive Behaviours, by C. Bergh, 1988. Thesis, Karolinska Institutet.
---------	--------------------------------------------------------------------------------------------------------------------------------------------------------------------------------	---------------------------------------------------------------------------------------------------------------------------------------------------------------------------------------------------------------------------------------------------------------------------------------------------------------------------------------------------------------------------------------------------------------------------------------------------------------------------------------------------------------------------------------------------------------------------------------------------------------------------------------------------------------------------------------------------------------------------------------------------------------------------------------------------------------------------------------------------------------------------------------------------------------------------------------------------------------------------------------------------------------------------------------------------------------------------------------------------------------------------------

Note: en-body is the body in English, de-body is the body in German, etc.

The rest of the fields can be filled in later or automatically.

5.2 Simple HTML

Avoid advanced and fancy HTML facilities, if not absolutely necessary.

5.3 Links between Answers

It is possible to include links between answers. Here is an example of an existing answer with links in it:

Question: Why is it mostly women who develop eating disorders?

Answer:

Over 90 % of those who develop eating disorders are young women. A contributory cause is that young women try to be beautiful and slim by means of a course of slimming diets and these often cause eating disorders to begin.

Their ideal of slimness doesn't correspond with the body's natural needs and therefore they must suppress the nutritional supply in order to achieve it. When they have once begun to suppress their nutritional needs, an eating disorder arises which later becomes permanent, whether or not they have achieved their ideal. That's how a diet can be the start of an eating disorder.

For example: Eve reads a fashion magazine containing photographs of super slim models and think she is to fat. She tries to follow the magazine's diet advice and lose about 15 kg in a few month. She receives lots of compliments and is encouraged to continue. However, Eve finds that one day she can't resist her intense hunger any longer and eats compulsively. When she has satisfied her hunger she continues to eat to avoid the intense anxiety which her failure to stay with the diet means. [More.](#) In her despair she tries to vomit to get rid of the food. Eve has got stuck in a pattern of starving, compulsive eating and vomiting, which she is unable to break. She is continuously terrified of going up in weight.

[More about unnaturally slim ideals.](#)

[Source](#)

In the example above, “[More.](#)”, “[More about unnaturally slim ideals.](#)” and “[Source](#)” are links to other pages. The “[Source](#)” is automatically inserted when the FAQ is generated, and links to a page with the information in the Source area of the FAQ.

The link “[More.](#)” is intentionally in a light grey colour, so as not to disturb ordinary reading too much. Compare the following two text examples:

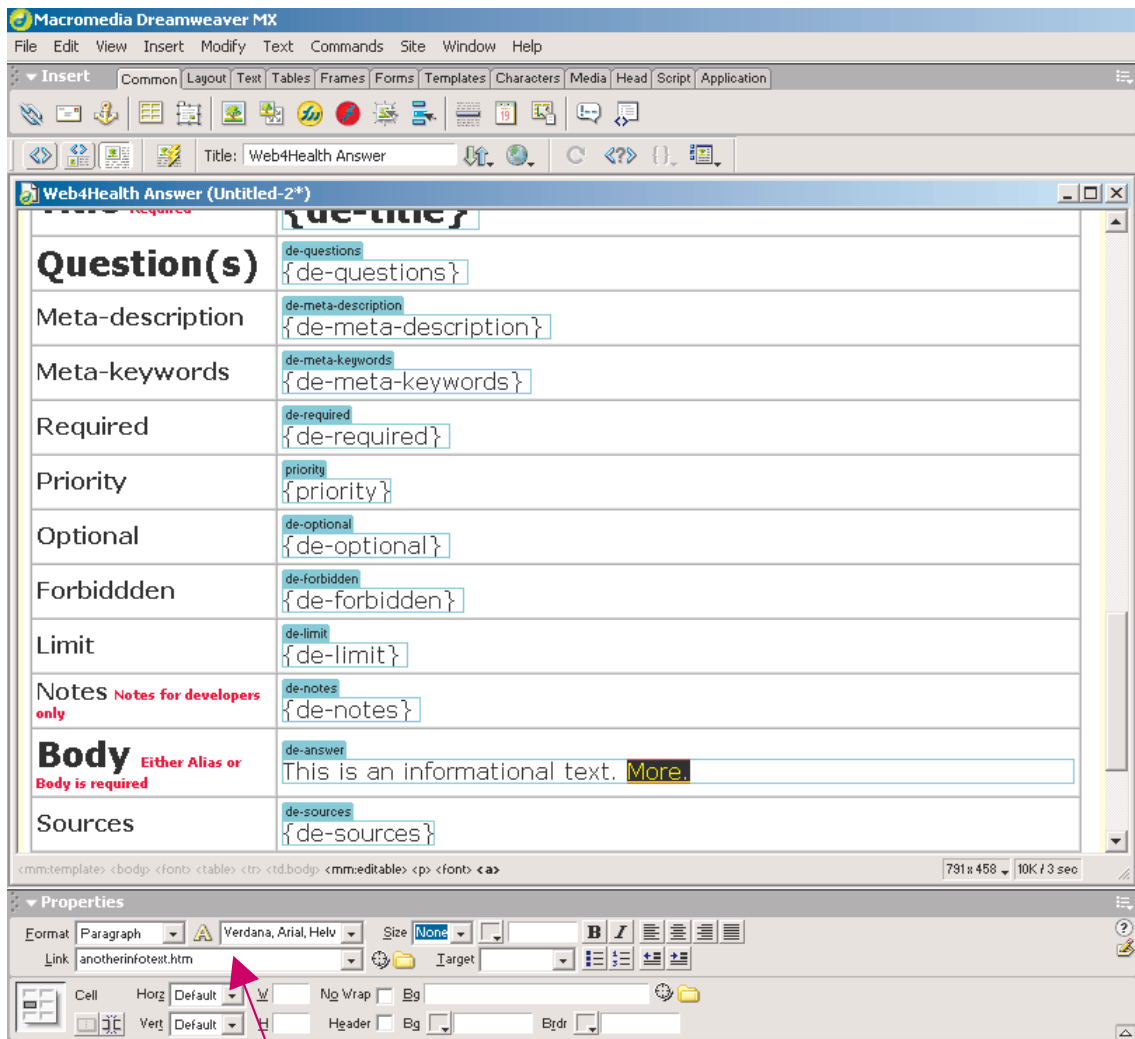
<p>For example: Eve reads a fashion magazine containing photographs of super slim models and think she is to fat. She tries to follow the magazine's diet advice and lose about 15 kg in a few month. She receives lots of compliments and is encouraged to continue. However, Eve finds that one day she can't resist her intense hunger any longer and eats compulsively. When she has satisfied her hunger she continues to eat to avoid the intense anxiety which her failure to stay with the diet means. More. In her despair she tries to vomit to get rid of the food. Eve has got stuck in a pattern of starving, compulsive eating and vomiting, which she is unable to break. She is continuously terrified of going up in weight.</p>	<p>For example: Eve reads a fashion magazine containing photographs of super slim models and think she is to fat. She tries to follow the magazine's diet advice and lose about 15 kg in a few month. She receives lots of compliments and is encouraged to continue. However, Eve finds that one day she can't resist her intense hunger any longer and eats compulsively. When she has satisfied her hunger she continues to eat to avoid the intense anxiety which her failure to stay with the diet means. In her despair she tries to vomit to get rid of the food. Eve has got stuck in a pattern of starving, compulsive eating and vomiting, which she is unable to break. She is continuously terrified of going up in weight.</p>
-------------------------------------------------------------------------------------------------------------------------------------------------------------------------------------------------------------------------------------------------------------------------------------------------------------------------------------------------------------------------------------------------------------------------------------------------------------------------------------------------------------------------------------------------------------------------------------------------------------------------------------------------------------------------------------------------------------------------------------------------------------------	-------------------------------------------------------------------------------------------------------------------------------------------------------------------------------------------------------------------------------------------------------------------------------------------------------------------------------------------------------------------------------------------------------------------------------------------------------------------------------------------------------------------------------------------------------------------------------------------------------------------------------------------------------------------------------------------------------------------------------------------------------------

The example to the right above is more difficult to read, because the highlighting of the link disturbs reading. The example to the left above is much easier to read, because the link is smaller, shorter and in a light grey colour.





To insert links with Dreamweaver:

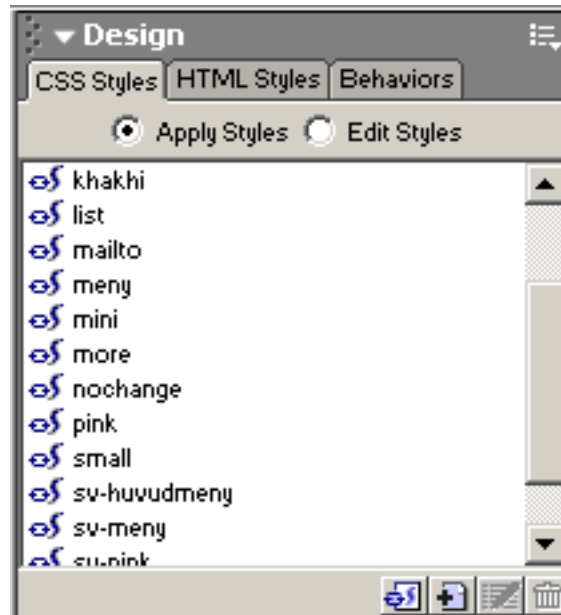
1. Write the word to contain the link, for example More..
2. Select the whole word which is to contain the link, for example **More.**
3. Open the window Windows -> Properties (unless it is already open).

Here is an editing window with a properties window at the bottom:



Type the web address of the page you are linking to here. If you are linking to another answer in the Web4Health set of answers, just type the file name of the answer in this field. For example, if you want to link to the page <http://web4health.info/en/answers/ed-psy-versus-normal.htm>, you need only type [ed-psy-versus-normal.htm](http://web4health.info/en/answers/ed-psy-versus-normal.htm) in the **Link** field above.

- Alternatively, you can push the  in **Link**    and locate the file with the answer you want to create a link to.
- If you open the Dreamweaver window **Window -> CSS Styles** you will see the following:



Note: If `Window -> CSS Styles` does not show a list of styles as shown above, you need to attach to a template. How to do this is described in section Attaching to a Template on page 10.

6. Select the word with the link (by clicking in the word in Dreamweaver, and then clicking on the `<a>` in the bottom bar of the main Dreamweaver window). Then click on either `more` or `mini` in the `CSS Styles` window. Click on `more` for links within the text (will be light grey), and on `mini` for links below the text (will be blue).

5.4 Links to other Web Sites

Links to other web sites are produced in a similar way to links to other pages of our own (as described in section 5.3 on page 11), but you have to fill in the whole absolute URL of the linked site in the link field as in this example:

Link .

5.5 Subject Trees

A special kind of pages are subject trees. These pages help users to find the right answer by selecting categories, just as in Yahoo. Here is an example how such a page can look like:



Eating Disorders; Links Page 1

[Top](#)
[Discuss this](#)
[Ask an expert](#)
[Print](#)

Eating disorders

[Overview](#) • [Bulimia](#) • [Anorexia](#) • [Binge eating](#) • [Difference between people with eating disorders and other people](#) • [Self-induced vomiting](#) • [Complications](#) ...

Causes

[Child care](#) • [Slim ideals](#) • [Cultural causes](#) • [Fast food](#) • [Preventing eating disorders](#) • [Food addiction](#) • [Sexual abuse](#) • [Lack of self-esteem](#) ...

Feelings and experience, hunger

[True and distorted hunger](#) • [To experience Hunger and Satisfaction](#) ...

Difference between People with Eating Disorders and Other People

[Recognition of hunger](#) • [Different Function for Different People](#) • [Eating disorders and tidiness](#) • [Self-hatred](#) • [Definition of eating disorders](#) • [Not showing up at an event](#) • [Disappearing menstruation](#) • [Binges](#) ...

Children and Child Care

[Forcing children to eat?](#) ...

Diagnosis and Treatment

[Drugs](#) • [Surgery](#) • [Step by step](#) • [Plan for getting well](#) • [Self-monitoring, diaries](#) • [Self-help](#) • [Self-feeding](#) • [Psychotherapy](#) • [Exercise](#) • [Your ideal weight](#) • [Changing your life style](#) • [Changing your eating habits](#) • [Family and friends](#) • [Do something else instead of eating](#) • [Where can I get help?](#) ...

Food, Diet, Slimming, Obesity

[Good slimming methods](#) • [Should I get slimmer?](#) • [Choosing a diet](#) • [Obesity/overweight](#) ...


Eating Disorders and Obesity Page 2


[About people with eating disorders](#) • [Eating disorders and addiction](#) • [Difference between people with Eating disorders and other people](#) • [How common are eating disorders](#) • [Research on eating disorders](#) • [Complications from eating disorders](#) ...

To produce such a page, it is easiest to start with an existing such page and modify it. The page above can for example be found at

<http://web4health.info/FAQ-entries/ed-links-1.htm>

1. Download this page in HTML format,
2. open it with Dreamweaver,
3. locate the cell containing the Body in English (en-answer),
4. click in that cell,
5. click on mm.editable in the bottom bar of the main Dreamweaver window,
6. give the **Copy** command to Dreamweaver,
7. open a new answer with the **New from Template** command,
8. locate the Body you want to modify,
9. click on mm.editable again,
10. and **Paste** the text you have copied.
11. Then modify this so as to become your new subject tree page.

The small round object between the items in the subject tree () is an image which you can find in <http://web4health/images/small-ball.gif>.

The () symbol marks those menu items, which refer to new link pages. It is available in two sizes, <http://web4health/images/links-big.gif> and <http://web4health/images/links-small.gif>. The larger size is used in headings, the smaller below headings, as shown in the figure on page 15.

5.6 Translating FAQs with Links in them

You may need to translate an FAQ written by another project partner from English to your own language, or translate your own FAQs to English. An FAQ which you translate may have links in it. Examples of FAQs with links in them are given in chapter 5.3 and 5.4 on pages 12-15.

Below is described a procedure to make it easier to translate such links. The procedure is described using the part of an FAQ below as example:

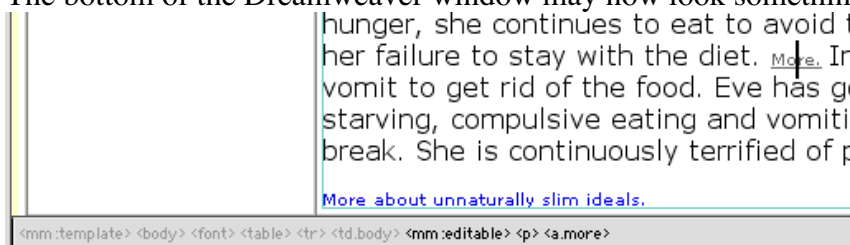
For example: Eve reads a fashion magazine containing photographs of super slim models and think she is to fat. She tries to follow the magazine's diet advice and lose about 15 kg in a few month. She receives lots of compliments and is encouraged to continue. However, Eve finds that one day she can't resist her intense hunger any longer and eats compulsively. When she has satisfied her hunger she continues to eat to avoid the intense anxiety which her failure to stay with the diet means. [More](#). In her despair she tries to vomit to get rid of the food. Eve has got stuck in a pattern of starving, compulsive eating and vomiting, which she is unable to break. She is continuously terrified of going up in weight.

[More about unnaturally slim ideals.](#)

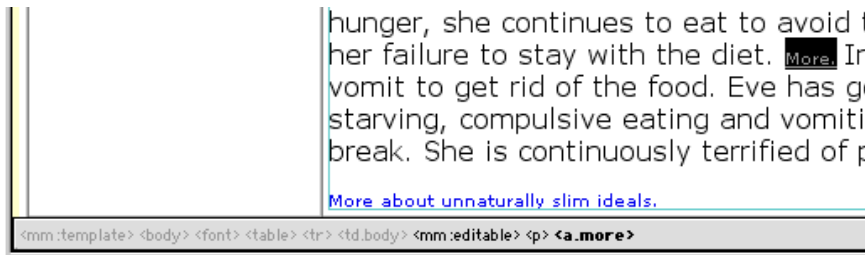
This answer has two links, labelled [More](#). and [More about unnaturally slim ideals](#).

To translate the link labelled [More](#)., do as follows:

- (1) Open two Dreamweaver window, one on the text to be translated, and another on the translation.
- (2) Start in the window with the text to be translated. Click anywhere inside the word [More](#)..
- (3) The bottom of the Dreamweaver window may now look something like this:



- (4) Click on the tag `<a.more>` in the bottom line of the Dreamweaver window. The bottom of the screen may now look like this:*



Note that the whole word More. is now highlighted so that it looks like this: More. .

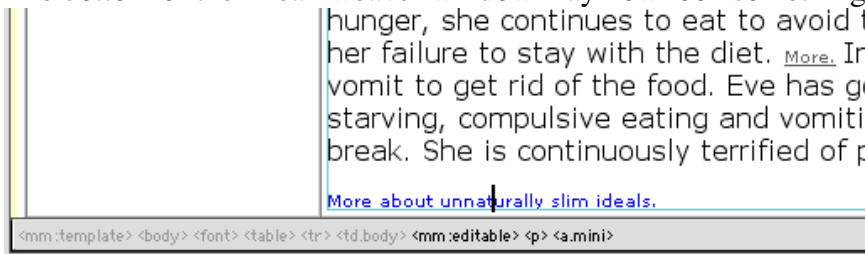
- (5) Give the Edit->Copy command (Ctrl-C on PCs).
- (6) Move to the Dreamweaver window for the translation and click where you want the linked word More. to be inserted.
- (7) Give the Edit->Paste command (Ctrl-V on PCs).
- (8) Click somewhere inside the pasted word More. and type the translated word. If you are translating from English to German, you will then see the following word:

MMehrore. .

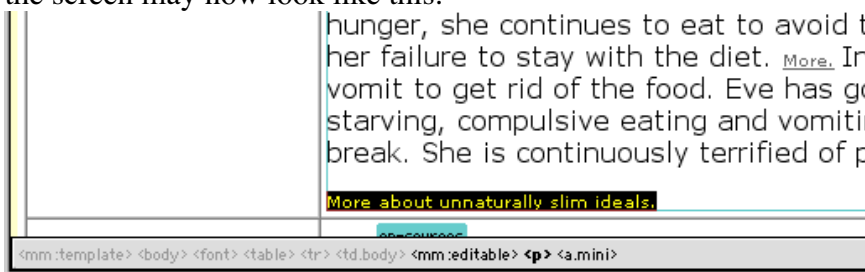
- (9) Remove the English parts of this word, you will then see: Mehr.

To translate the link labelled [More about unnaturally slim ideals](#), the procedure is very similar:

- (1) Open two Dreamweaver window, one on the text to be translated, and another on the translation.
- (2) Start in the window with the text to be translated. Click anywhere inside the phrase [More about unnaturally slim ideals](#)
- (3) The bottom of the Dreamweaver window may now look something like this:



- (4) Click on the tag `<p>` in the bottom line of the Dreamweaver window. The bottom of the screen may now look like this:*



Note that the whole phrase [More about unnaturally slim ideals](#) is now highlighted so that it looks like this: [More about unnaturally slim ideals](#)

- (5) Give the Edit->Copy command (Ctrl-C on PCs).
- (6) Move to the Dreamweaver window for the translation and click where you want the linked phrase [More about unnaturally slim ideals](#) to be inserted.
- (7) Give the Edit->Paste command (Ctrl-V on PCs).

(8) Click somewhere inside the pasted phrase [More about unnaturally slim ideals](#) and type the translation. If you are translating from English to German, you may then see the following word:

[MMehr zur unnatürlicke schlank Ideale ore about unnaturally slim ideals](#)

(9) Remove the English parts of this phrase, you will then see:

[Mehr zur unnatürlicke schlank Ideale](#)

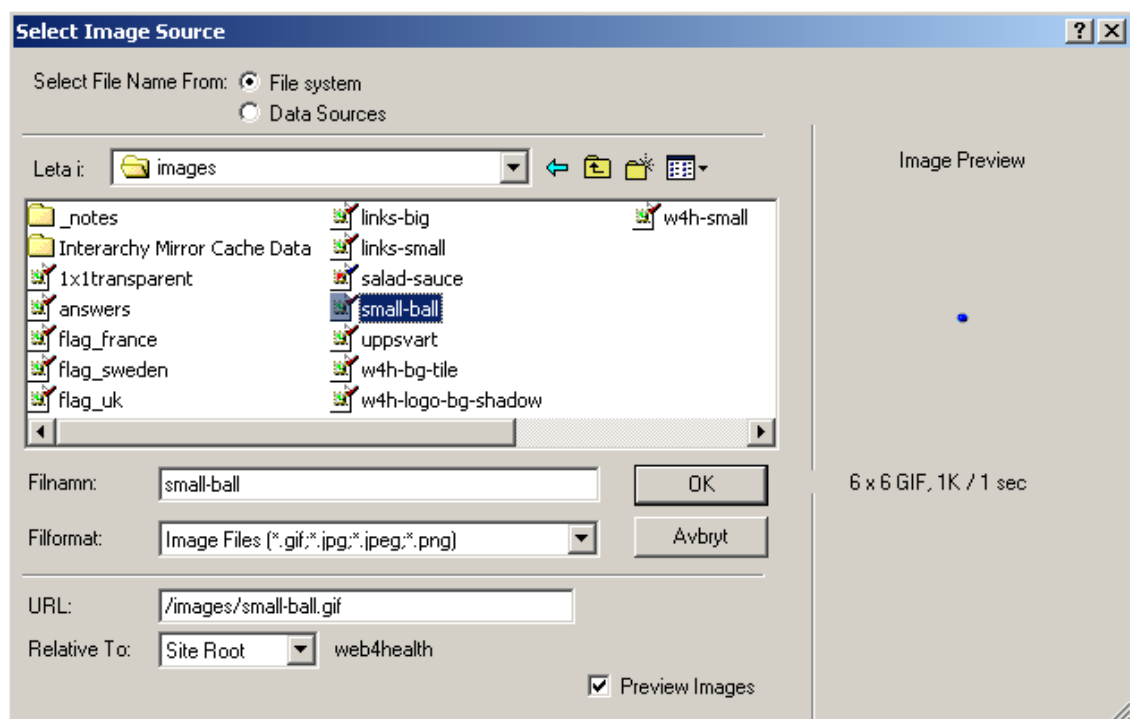
Note 1: Note the difference between translating [More.](#) and [More about unnaturally slim ideals](#), that for [More.](#) you clicked on the tag `<a.more>` at the bottom of the Dreamweaver window, while for [More about unnaturally slim ideals](#), you clicked on the tag `<p>` at the bottom of the Dreamweaver window. The reason for this is that for [More about unnaturally slim ideals](#) you are copying a whole paragraph.

Note 2: If there are many links, you can copy the whole English text in one copy and paste operation to the target window, and then translate each link separately by typing the new text inside the link and then removing the surrounding text. This would be suitable, for example, to translate a link text like the text shown on 15 above.

6 Inserting Pictures in Answers

If your answer needs a picture (such as in the existing answers <http://web4health.info/sv/answers/ed-difference.htm> and <http://web4health.info/sv/answers/food-sugar.htm>) then put the picture in the folder `web4health/images` for language-independent images (such as the picture in <http://web4health.info/sv/answers/food-sugar.htm>) and put the picture in the folder `“web4health/xx/images”` where `“xx”` is the language, for example `“en”` for English.

Insert the picture in Dreamweaver using the `Insert->Image` command which gives the following window:



Select the file containing the image.

Relative To: should indicate:

Relative To: web4health ,

and *not*

Relative To: .

7 Alternative: Word Template

An alternative Word Template is also available as <http://web4health.info/Templates/w4h-word-template.doc> or <http://web4health.info/Templates/w4h-word-template.dot>. (Only one of these two may work for you, depending on reasons I do not know why.)

This template can be used for bulk entry of new FAQs, but may not be possible to use for minor changes to existing FAQs.

This template looks like this:

File name	health-info-form.doc
Title	
Questions	
Author	
Body	

Note 1: Only write in the table cells in the right column. Do not change anything else.

Note 2: Please save in "Rich Text Format" (RTF format) not in Word format.

7.1 Installation of this Template

<http://web4health.info/Templates/w4h-word-template.doc> or <http://web4health.info/Templates/w4h-word-template.dot>. (Only one of them may work) and put it into a suitable templates folder. On my Windows 98 computer, the folder to use was named C:\WINDOWS\Application Data\Microsoft\Templates but all versions of Word may not use the same folder for storing user-defined templates.

7.2 Writing a new FAQ

To write a new FAQ, proceed as follows:

- (1) Start Microsoft Word.
- (2) Use the **Archive->New** command.
- (3) Click on wb4h-word-template.dot.
- (4) Click on OK.
- (5) Fill in the empty table cells Title, Questions, Author, Body, Sources.
- (6) Use the **Archive->Save As** command.
- (7) Locate the folder where you want to store the new text, for example C:\web4health\en\FAQ-entries\.
- (8) **Important:** Pull down the "File Format" menu to RTF format.

- (9) Chose a suitable file name according to the principles specified in <http://web4health.info/documentation/KOM2002-page-naming.pdf>.
- (10) **Important:** The file name should not be longer than 27 characters (excluding the ".rtf" at the end).
- (11) Click on the Save button.
- (12) Close the file.

7.3 Default Values

If you want default values in the Author and Sources file, you can get this by editing the w4h-word-template.dot/.doc file. You can still change these fields if you want, this is just so that you do not have to write the same text for every new FAQ you write.

7.4 Inserting WWW links

If you want to insert WWW links into your FAQ, then select the text to get a link, and use the **Insert->Hyperlink** Word command.

If the link is to another Web4health FAQ, just type the name of the FAQ, ended with ".htm" into the "File or web site" field. If the link is to a web page outside of Web4health, type the full web address into the "Field or web site" field.

7.5 Getting FAQs Inserted into the Data Base

If you use this procedure to produce FAQs, KTH can easily convert them to HTML using a program called RTFtoHTML, and then further convert them to our input format.

To reduce the work load for me, do not send me single files, send me a number of files which I can process at the same time. The method described above cannot be used to add single new FAQs directly to the groupware, only for bulk production of many FAQs which you send to me for processing. Each FAQ should be in a separate file, you can send the whole folder with new FAQs to me, compressed in ZIP format.

7.6 Comparison to Using Dreamweaver

This is an alternative to Dreamweaver, you can also use Dreamweaver if you so prefer. Dreamweaver gives you somewhat more detailed control of the text layout than you get with Word. But if the only formatting you use is occasional bold or italic text, occasional line and paragraph breaks, occasional numbered or bulleted lists, occasional embedded WWW links, then the Word method should work as good as using Dreamweaver. Pictures should also work, if you produce the picture in bitmapped format before inserting them into the text. Also send the pictures as separate files to me so that I ensure that they get inserted correctly into the web page we are producing.

Note: If you use the procedure described above, you might *not* be able to use the same procedure to modify FAQs which already are in the groupware data base. You will have to use the groupware to modify such files, as described in the chapter "Modifying an FAQ" in D5.1A (<http://web4health.info/documentation/KOM2002-groupware.pdf>).

8 References

- D 5.1A KOM2002 Groupware Use in Web4Health, by Jacob Palme.
KOM2002 deliverable D 5.1A.
<http://web4health.info/documentation/KOM2002-groupware.pdf>
- D 5.1C Naming of Web4Health Informational Pages, by Jacob Palme, KOM
2002 deliverable D 5.1C.
<http://web4health.info/documentation/KOM2002-page-naming.pdf>.

Appendix A: Directory Structure of Web Site

web4health main directory

File name	Description
web4health	Main directory
index.html	Home page for the whole directory, refers to the English home page
de	German subdirectory
el	Greek subdirectory
en	English subdirectory
images	Non-language dependent images
it	Italian subdirectory
nl	Dutch subdirectory
sv	Swedish subdirectory
Templates	Templates

Language subdirectories (de, el, en, it, nl, sv)

Each of the language subdirectories has the following structure :

File name	Description
FAQ-entries	Folder into which you put your new answers. I have put a few answers here as examples in English only.
index.html	Home page for this language
answers	Area with answers, such as http://web4health.info/en/answers/
index.html	Directory page of this area, such as http://web4health.info/en/answers/index.html
images	Area with language-dependent images
after.gif	Two language-dependent images used in the answer
before.gif	http://web4health.info/answers/ed-difference.htm
w4h-tittle.gif	Image used in the web page http://web4health.info/en/index.html
sfaq	

File name	Description
groups-list.txt	List used to produce a structured listing of web pages, such as http://salut.dsv.su.se/salut-faq-sv/faq.exe?
stoplist.txt	List of common words which are allowed to occur in questions even if they are not specified in the question template.
substitutes.doc	List of common synonyms used in natural-language question-answering, in Word format.
substitutes.txt	The same list in plain text format.

The files at present have dummy English versions. They need to be translated, but this is not the most urgent priority in our work just now.

Templates subdirectory

The Templates subdirectory contains the following files:

File name	Description
faq-db-template-en.faq	Template for moving a page into the FAQ system in English
faq-db-template-sv.faq	Same template in Swedish
FAQ-DW-entry-all-lang.dwt	Template for entering a page in all languages
FAQ-DW-entry-de.dwt	Template for entering a page in German
FAQ-DW-entry-el.dwt	Template for entering a page in Greek
FAQ-DW-entry-en.dwt	Template for entering a page in English
FAQ-DW-entry-en-Swedish.dwt	The same template, but with defaults added suitable for the Swedish medical partner, in order to show how you can add your own defaults
FAQ-DW-entry-it.dwt	Template for entering a file in Italian
FAQ-DW-entry-nl.dwt	Template for entering a file in Dutch
FAQ-DW-entry-sv.dwt	Template for entering a file in Swedish
